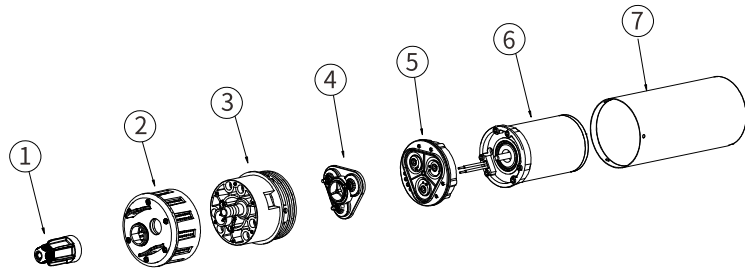


Product component explosion diagram



Key	Component name	Material Description	Yes/No Wading	Effect
1	Clip assembly	Cap frame. Clamp cap: PA6; mother panel PBT + 40% G clip plastic core: rubber Hardware: copper	Yes	Wiring, waterproof
2	Lift plate assembly	Lifting plate: PA + 30% GF, decorative cover Hardware: Stainless steel 304	Yes	Lift up and down
3	Pump head assembly	Pump head: PPS+40% GF, water connection: POM; male panel PBT + 40% G Seal: rubber, hardware: copper	Yes	Seal
4	Seat assembly	Seat: POM; Valve: Fluorine glue	Yes	Incoming water conversion
5	Diaphragm and rotating components	Diaphragm: TPV; pump seat & swing bracket: aluminum alloy, Eccentric: Ferroalloy	Yes	Pump drive section
6	Motor components	Front and rear cover: aluminum alloy; shell: iron wire: copper. Axis: high carbon steel	No	The drive part of the pump
7	Sleeve	Stainless steel 304	Yes	Shell seal

Head flow table

TOTAL VERTICAL LIFT		FLOW RATE PER HOUR		SOLAR ARRAY SIZE MINIMUM TOTAL POWER RATING	CURRENT AMPS
FEET	METERS	GAL	LTR	WATTS	
20	6.1	103	390	43	1.6
40	12.2	100	378	54	2
60	18.3	97	366	62	2.3
80	24.4	94	354	70	2.6
100	30.5	90	342	80	3
120	36.6	87	330	88	3.3
140	42.7	84	318	96	3.6
160	48.8	81	306	105	3.9
180	54.9	78	294	113	4.2
200	61.0	73	276	120	4.5
230	70.1	67	252	135	4.9

SEAFLO[®]

Solar Pump Manual

Pump connection and installation instructions

1. Selection and installation of cable

- **Power cord selection:** external 14 # AWG power cord
- **OD size reference:** Figure 1

RECOMMENDED CABLE TYPE	DIMENSION OF CABLE
ROUND	

CAUTION: Do not select irregularly shaped, rough or groove surfaces for cables

Figure 1

WARNING

- Incorrect installation will void the warranty.
- Do not use the solar pump for petrol / petrol, petroleum products, solvents, diluents or any other flammable liquid with a flash point below 82°(180°F).
- Can not be used in flammable gas atmospheres.

2. Assemble the cable guide

- Stripping the outer cable sheath 0.9 "(23mm) (Figure 2).
- Cut 0.5 "(13mm) lead (Figure 3).

- **Insulation core length reference:** Figure 2
- **lmetal wire core pull length reference:** Figure 3

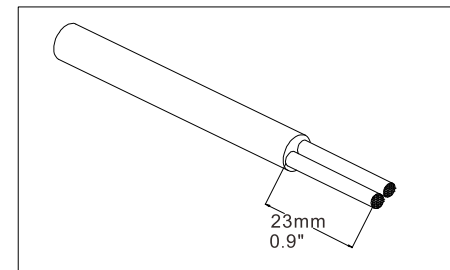


Figure 2

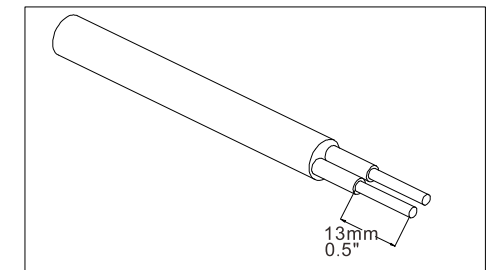


Figure 3

3.Cable wiring installation

Step one: the 14 # cable stripping end in order through,clip cap.

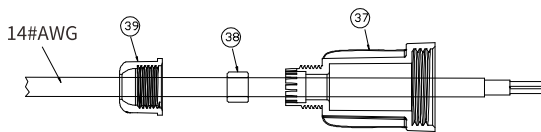


figure 4

Step two: the 14 # cable stripping end connected to the needle plate zero line FireWire hole with a screw lock.

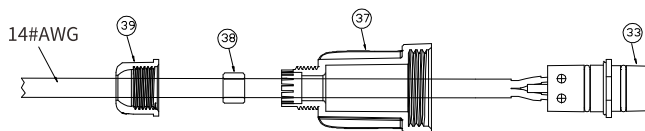


figure 5

Step three: the mother of the panel and the male needle panel on the plug, and then the cap and the lifting plate tightening fixed.

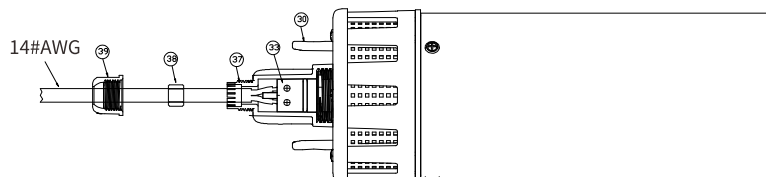


figure 6

Step four: the clamp core into the cap and then clamp the cap and cap tighten the fixed.

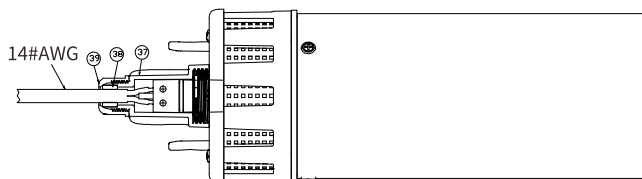
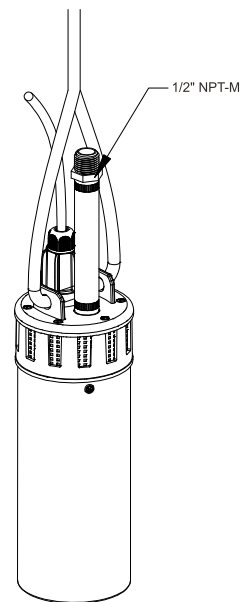


figure 7

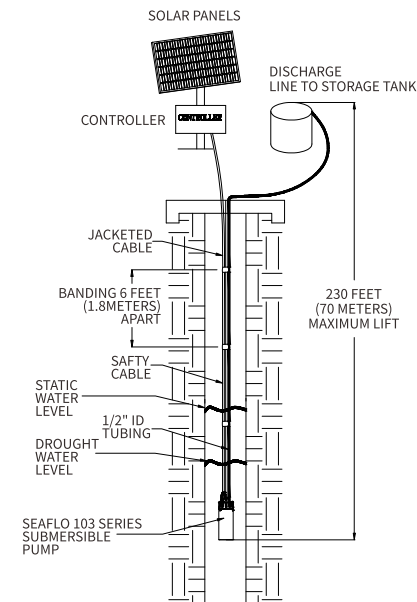
Pump installation



Hook the safety line (sling) (Figure 8).

Note: The safety wire (rings) should be corrosion resistant.

- Insert the safety line (not including the parts) lift plate hole.
- Fix the line with the appropriate connection above the pump about 1-2 feet (30-60 cm)



Hoses, safety cables and cable connections (Figure 9).

Note: Use straps to drop together at every 6ft (1.8m).

This tape will prevent unnecessary damage.

Product parameter information

Pump chamber design structure: three chamber diaphragm pump	Dividing depth: 100 feet (30 meters)
Input voltage: DC24V	Maximum head: 230 Feet (70 m)
Motor: DC permanent magnet motor; with temperature control	Outlet interface: 1/2 "(12.7mm)
Current: 6.0A MAX	Inlet: 50 mesh stainless steel filter
Fuse: 8.0 AMP	Open flow: 6.5LPM ± 5%
Power: 140W MAX	Waterproof parts Material details: nylon, PPS, POM rubber; 304 stainless steel
Reflow range: 110-120PSI	